

Costing and Enterprise Architecture solutions make better decisions together

Greg Holmes, Apptio, RVP Presales EMEA

about Greg Holmes & Apptio

Focus in IT, Cloud, Software and Application lifecycle for over 20 years, including time in Australia, Germany, USA and now UK.

At Apptio we love understanding the business impact good IT, Projects and Applications can make, and how to better visualize and collaborate on it.



Your Profile

[linkedin.com/in/gregholmes](https://www.linkedin.com/in/gregholmes)



Email

gholmes@apptio.com



Twitter

[GregHolmes007](https://twitter.com/GregHolmes007)

Disruption Is Certain



90%
of CIOs have suffered at
least one major turn in
the last 4 years

Organizational Fitness Matters

Attract Less Talent

Lower Budgets Than Peers

Launch Initiatives More Slowly

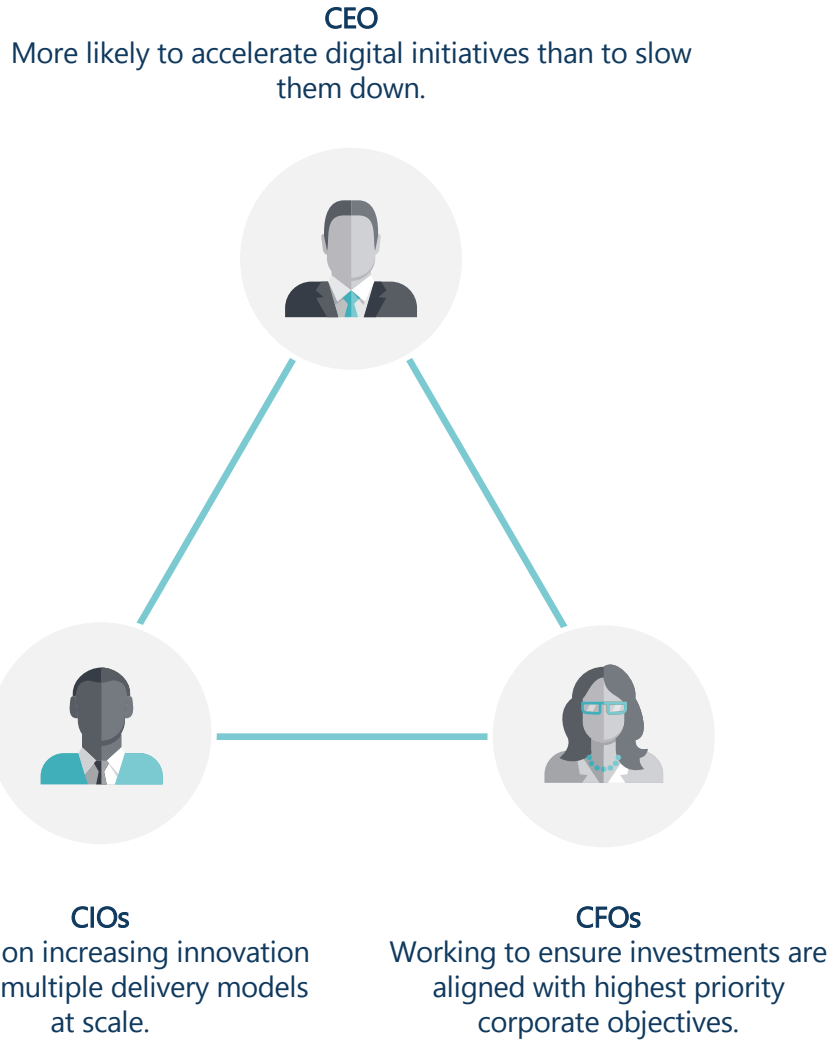
Permanent
Structural Damage

Slower Top Line Growth

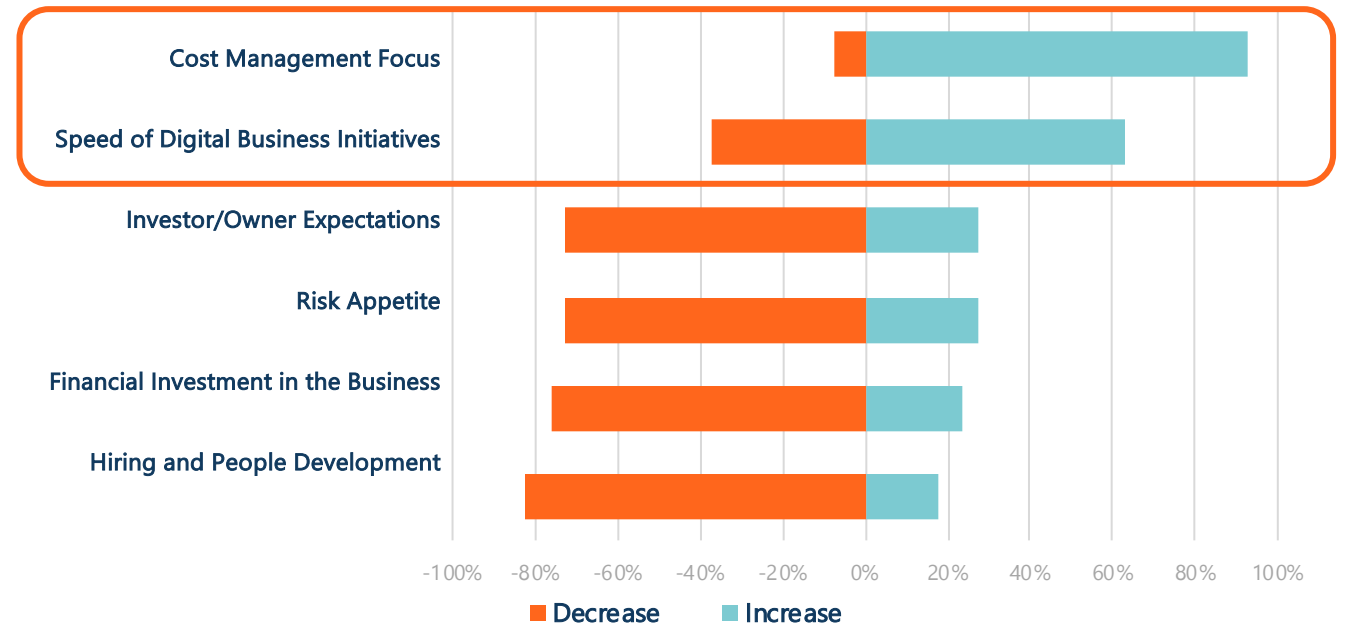
Shrinking Profit Margins

Less Capital to Invest

The Response to Economic Slowdown



What kind of impact does an economic slowdown have on your business plans?



n = 163

| Source: 2020 Gartner CEO and Senior Business Executive Survey | ID: 721923

How can enterprise architects help organizations become fit to thrive?



**PRIORITIZE THE
MOST
IMPACTFUL
APPS, SERVICES
&
TECHNOLOGY**



**REMOVE &
REDUCE
REDUNDANT
TECHNOLOGY**



**BUILD
INTEGRATIONS
THAT INCREASE
OUTPUT**



**ALIGN
TECHNOLOGY
CHOICES TO
NEW WAY OF
WORKING**



**ENSURE
APPLICATIONS
MEET
REGULATORY
AND
OPERATIONAL
NEEDS**

Accelerating Digital Transformation, Together



Technology Business
Management Leader



Enterprise Architecture
Management Solution

Application Cost
& TCO Data

Analytics that answer app
cost & TCO questions



IT Finance



Application
Architecture
Data

Analytics that answer
technical fit questions



Enterprise Architects



Detailed

transparency that justify
key choices for planned
initiatives

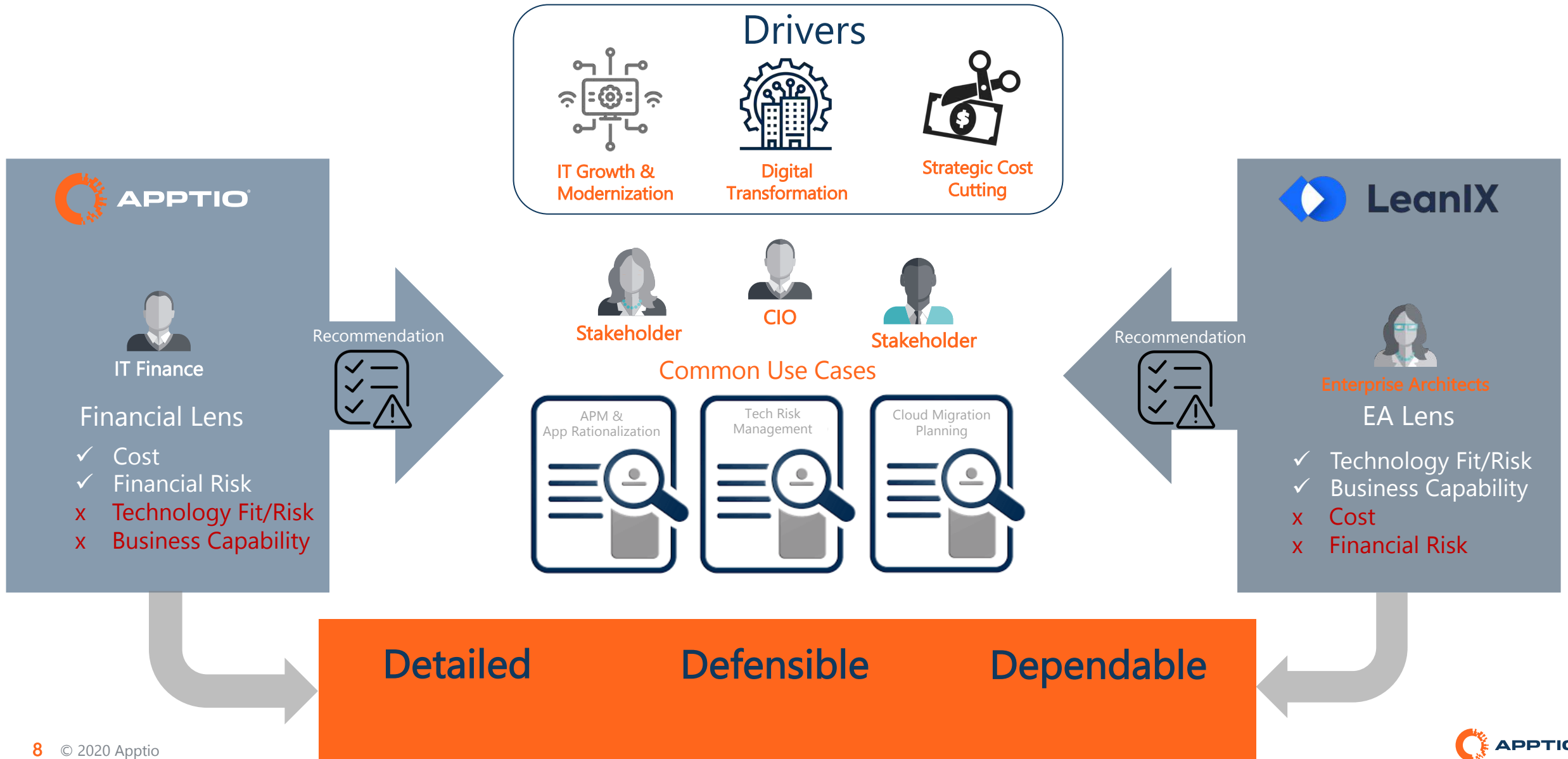
Defensible

decisions backed by cost,
risk and fit analysis

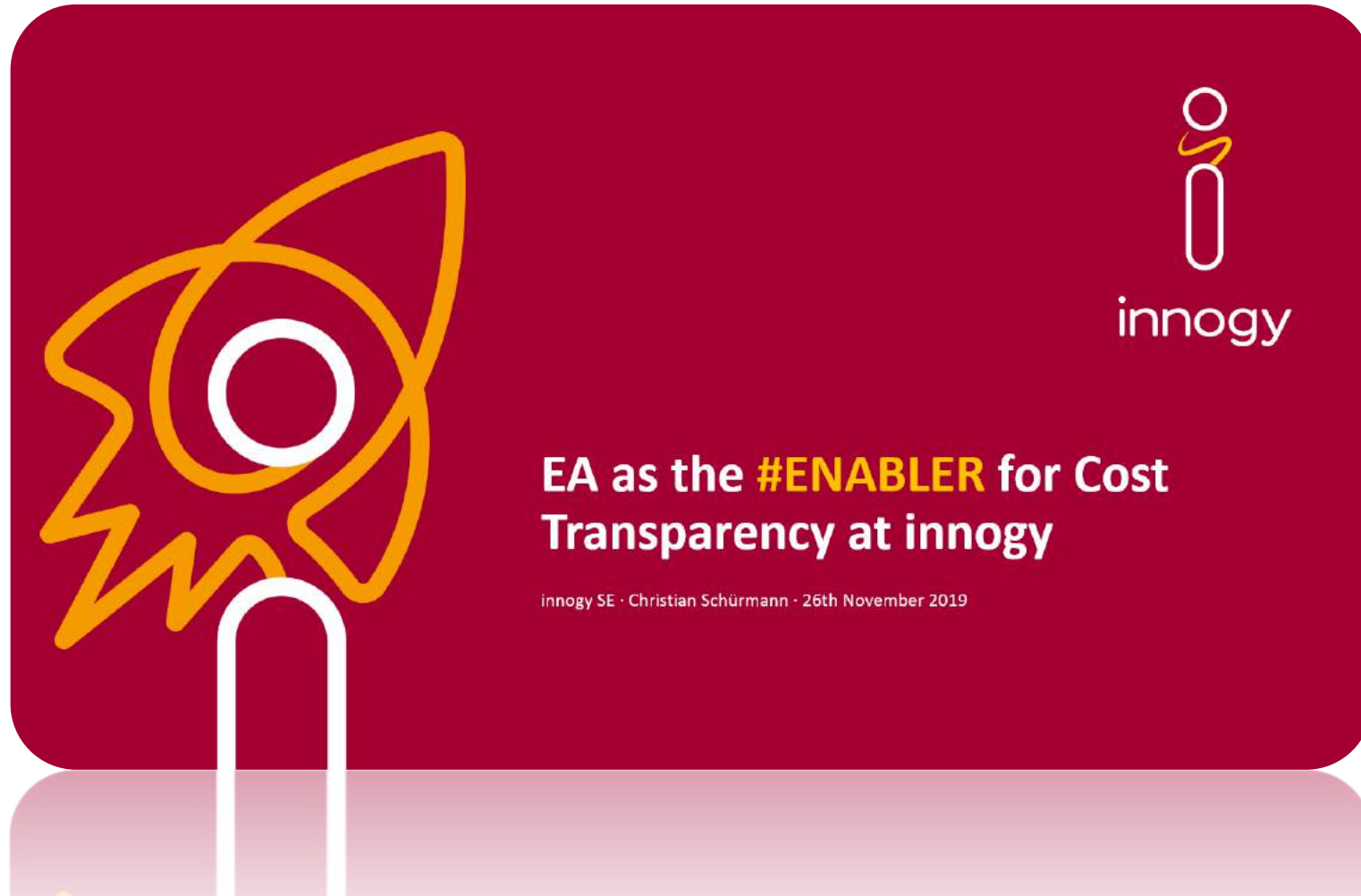
Dependable

up-to-date data that
supports ongoing
progress monitoring

Tackling Same Use Cases from Different Sides



Last year – innogy presented Enterprise Architecture as an enabler for Cost Transparency



- Understanding composition of services and apps
- Mapping to key consumers
- Lifecycle & impact on cost decisions

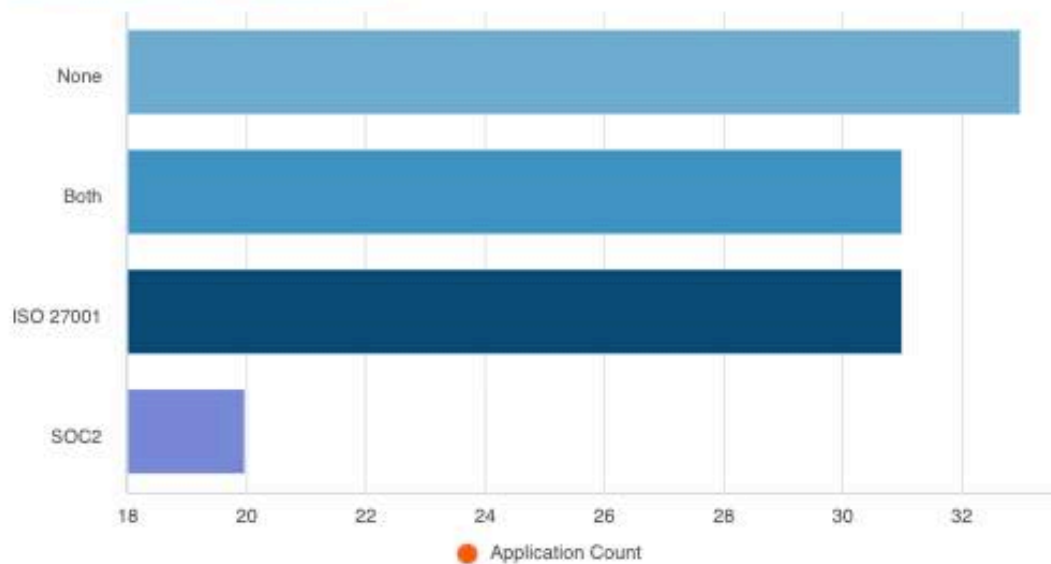
Compliance Requirements

Example of data collaboration

EA Data can flag requirements

Regional or Industry based

Application Count by Compliance



View Compliance Policies

n/a
 GDPR
 ISO27001
 SOC2
 SOX

Corporate Services

Fleet Management

FMS Ultimo

Legal

AttorneyNet Law+ Lex Actual

Purchasing

Contract Management eShopping SuppList

Real Estate Management

RELAX

Customer Relationship

After Sales Service

Call Center Management Call Center Management 2.0 Mailsnake

Customer Service

CustEchoe Americas CustEchoe Asia/Pacific CustEchoe Europe

CustEchoe New issueTrack serviceEngage

Opportunity, Order & Sales Management

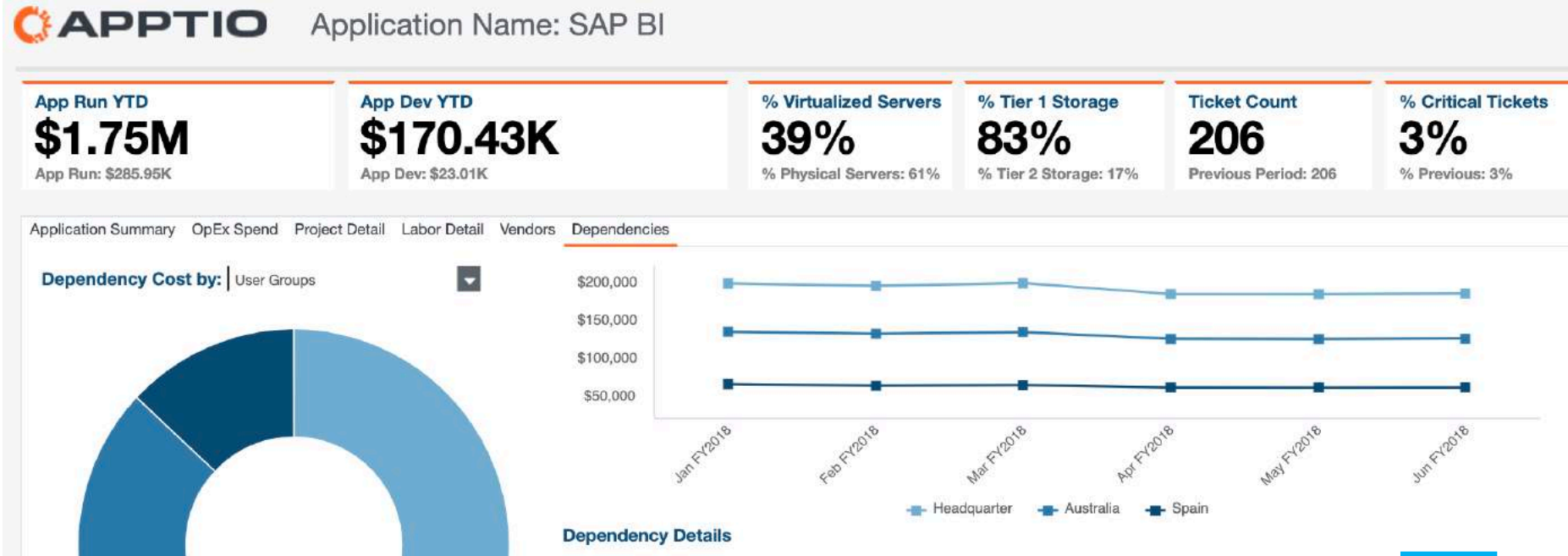
OMS salesforce Light

Retention & Loyalty Programs

Bonus Card Americas Bonus Card Asia/Pacific Bonus Card Europe

Bonus Card Use Watch Revenue Collector

Compliance Requirements



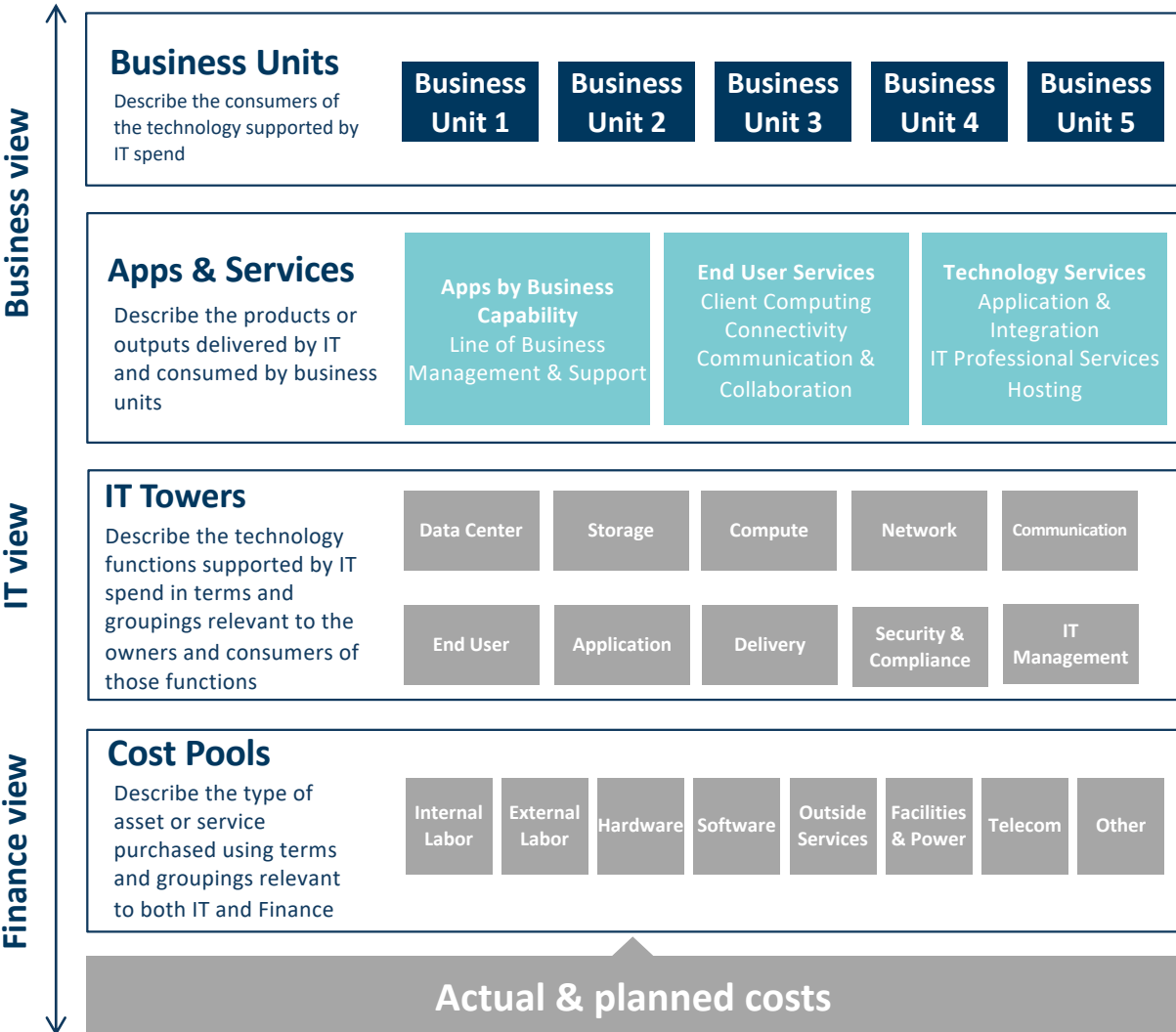
Redundant applications are being considered for consolidation,

Do applications meet company mandated requirements - ISO 27001 or SOC2

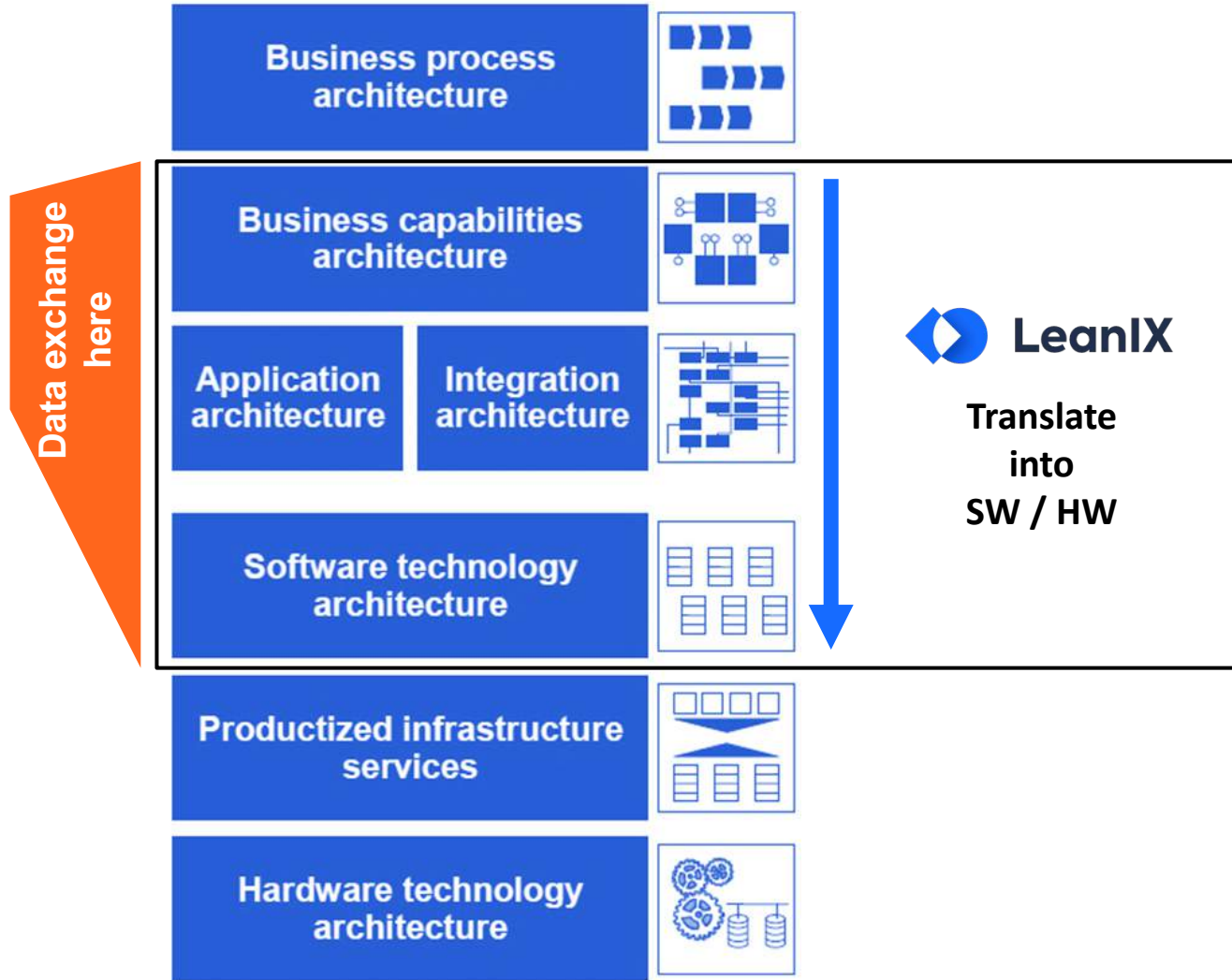
Are there GDPR issues?

Application Name	ISO 27001	SOC2	Both	None	Total
CoA	1				1
SAP FI			1		1
SAP CO				1	1
SAP BI		1			1
On-Line Job Application				1	1
Outlook Web Access	1				1
Office Communicator	1				1
Microsoft Office SharePoint Server		1			1
Lyris Email List Manager			1		1
Instant Messenger Gateway				1	1
Cisco Unity View Mail for Outlook				1	1
Exchange 2012		1			1

Automated Data Flow between Apptio & LeanIX



ATUM Model



McKinsey Architecture Stack

Data Ingestion

Across hundreds of sources

Data Integration & Structuring

Uniting data across disparate sources and dimensions automatically into a meaningful structure

Core Capabilities

Delivering best-in-class purpose-built features

Unified Platform

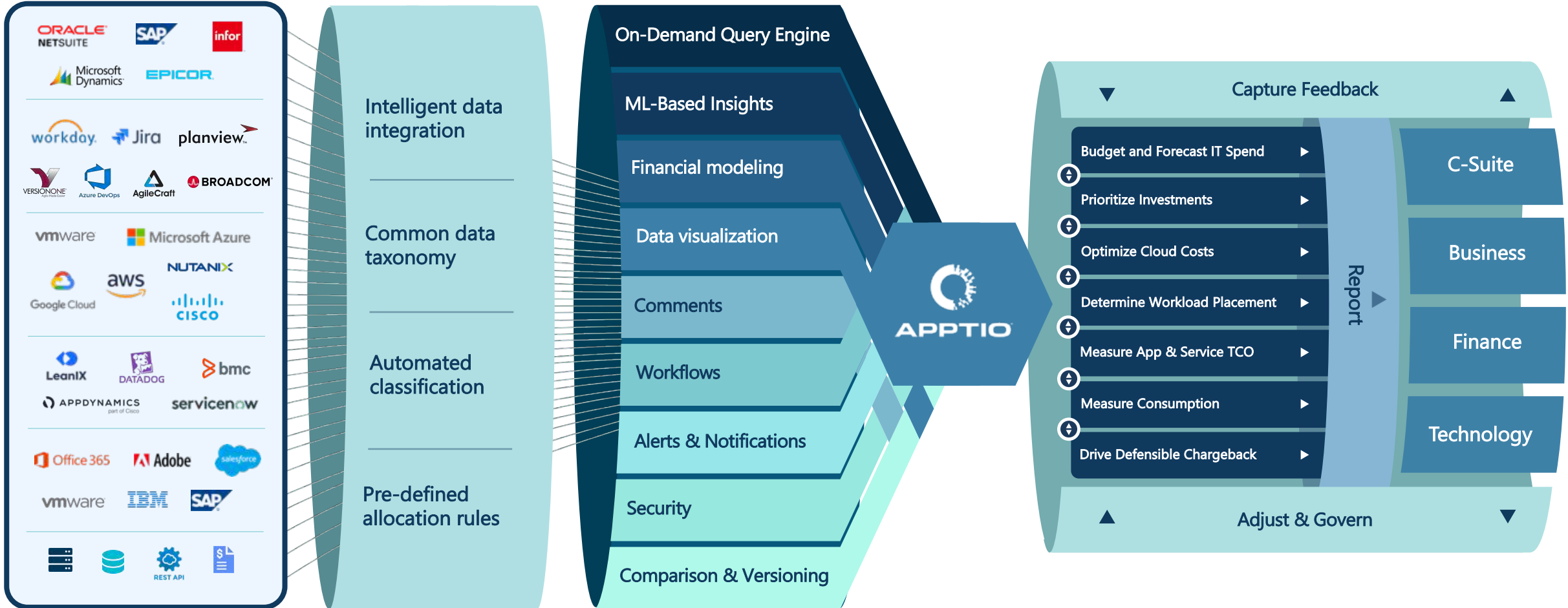
Expanding value creation and capture by uniting data, capabilities, and people

Activities and Underlying Use Cases

Supporting robust financial management activities

Across Your Organization

Enabling communication, decisions, and action across stakeholders





Potential Benefit \$989.41K

6/25/20

Hidden Vendor Spend

Potential Benefit \$1.25M

6/25/20

Applications with High Unit Cost

Potential Benefit \$2.76M

6/25/20

Redundant Vendor Contracts

Potential Benefit \$5.21M

6/25/20

Redundant External Labor Providers

Potential Benefit \$63.68K

6/25/20

Organizational Spend Overage

Potential Benefit \$134.89M

6/25/20

Anomalies in Labor Spend

Potential Benefit \$118.47K

6/25/20

Consultants with High Billing Rates

Potential Benefit \$315K

6/25/20

Activated Jun 25, 2020, 6:12:22 PM

Anomalies in Labor Spend

Data last updated Jun 26, 2020, 2:11:10 PM

Acknowledge

Observation

Cost centers with a $\pm 5\%$ change in labor spend: 8

Your monthly labor spend should not vary much. A sudden change can indicate an issue with data or unplanned spend. There are cost centers with labor spend that changed $\pm 5\%$ from last month. A review is recommended.

Anomalies Detected

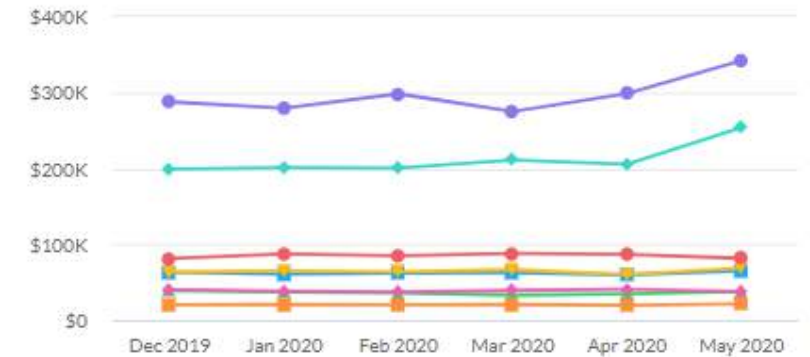
8

Analyze

Surface Insights and Opportunities

Our inference engine automatically analyzes your data to discover opportunities to reduce spend, optimize costs and reduce risk that would normally go unnoticed.

Cost Centers with anomalies



- Apps - Mfg & Dist (CC-210)
- Apps - Sales & Ops (CC-220)
- Data Center - NA (CC-320)
- Data Network (CC-330)
- Field Supprt - NA (CC-360)
- IT Security (CC-370)
- Service Desk (CC-350)
- Voice and Call Center (CC-335)



The Undisputed ITFM Market Leader

1000+

Customers

14

Patents

1000+

Employees

63%

Fortune 100 Customers

18

Global Locations