



# **LeanIX + Lucidchart: taking visualization and collaboration to the next level**

EA Connect Day September 2020

# Business is more complex and moving faster than ever before.

How can your business reach its full potential if you can't see how it all fits together?



We empower people to see  
and understand how their  
business works, so they can  
innovate faster.

# See more. Know more. Do more.

Lucidchart is a visual workspace that combines diagramming, data visualization, and collaboration to accelerate understanding and drive innovation.



# 20 million

users

# 99%

Fortune 500

# Lucidchart works where your team works

## Productivity

 Confluence

 Jira Software

 Office 365  slack

G Suite  Quip  GitHub



## Data visualization

 zapier



Google  
Sheets

 bambooHR™

 LinkedIn

SALES NAVIGATOR

### Premium connectors



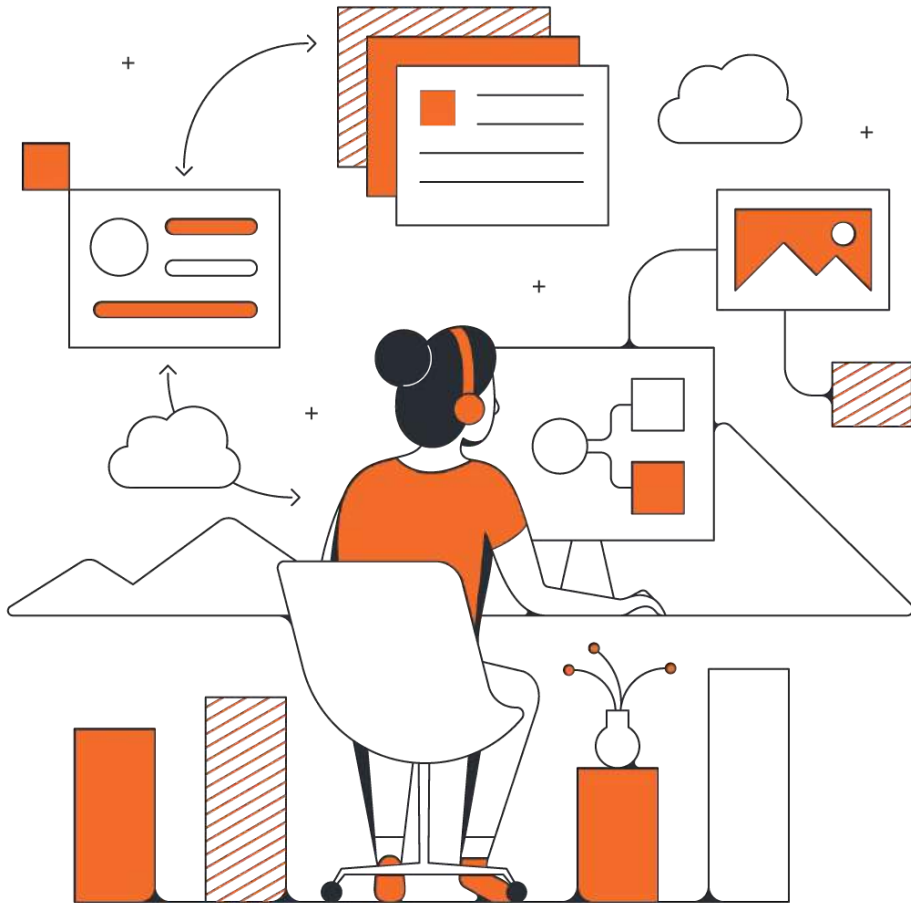
amazon  
web services



Google Cloud



Microsoft  
Azure



**Understanding  
enterprise  
architecture is  
growing more  
difficult —especially  
in a remote world.**

# Common challenges enterprise architects face



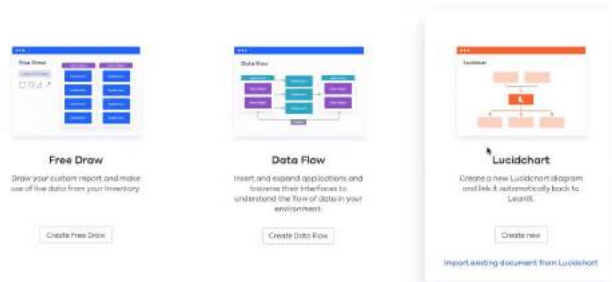
- Clearly designing, understanding, and communicating complex systems and processes
- Understanding how different systems connect and communicate with each other
- Communicating designs to non-technical stakeholders and leaders, and bridging the gap between business & IT



# Introducing Lucidchart's integration with LeanIX

An out-of-the-box integration to enhance  
collaboration and architecture modeling

### Choose a diagram type



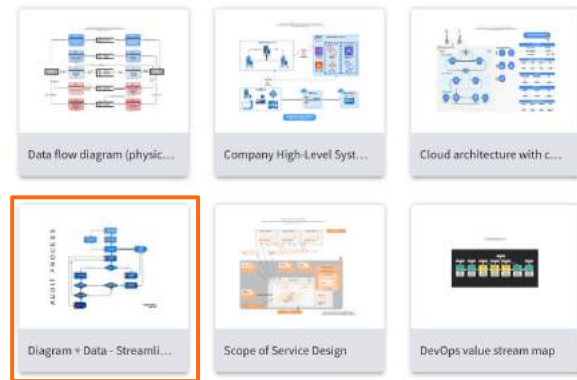
Choose **Lucidchart** as a **third Diagram type** in LeanIX.

**Import and manage** Lucidchart documents as LeanIX Diagrams, including all available sharing options.

Allows **explicit linking of diagrams** to Fact Sheets, including **previews** in Fact Sheet for quick access.

State-of-the-art diagramming solution, offering **rich diagramming feature sets** beyond LeanIX capabilities

### My Documents

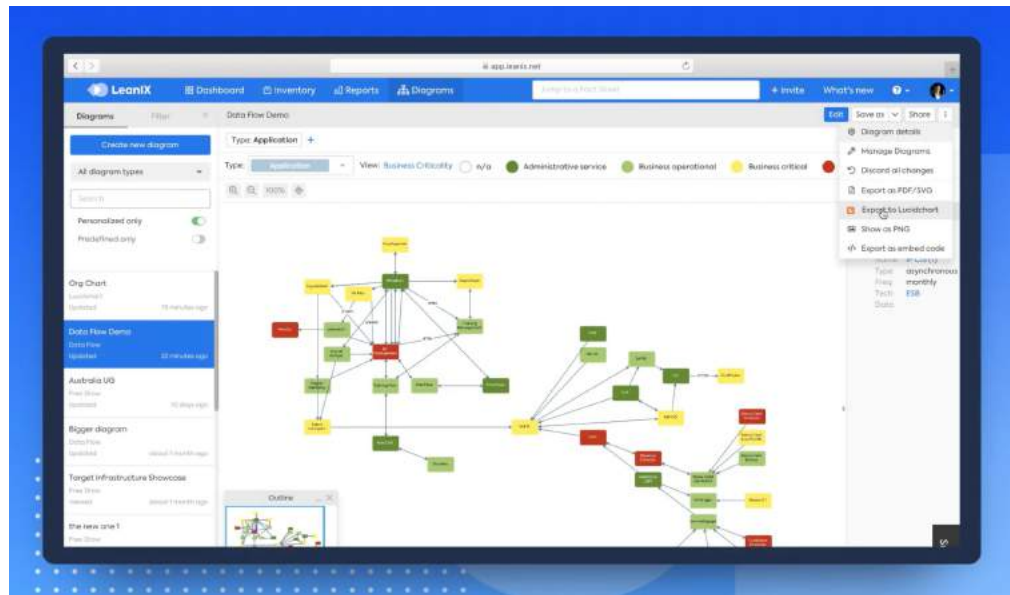


**Preview, open, and edit documents** in Lucidchart.

**Convert existing LeanIX diagrams** into Lucidchart documents.

Apply Lucidchart's **rich feature set** like styling, layers, data linking, auto-visualization, and more.

# We're listening to your feedback



## What current users are saying:

- There is value in bi-directional syncing of data between Fact Sheets and Lucidchart
- Include additional shape libraries for EA use

# Why enterprise architects use Lucidchart

## Easily visualize

processes and understand information and data flows.

## Monitor and improve

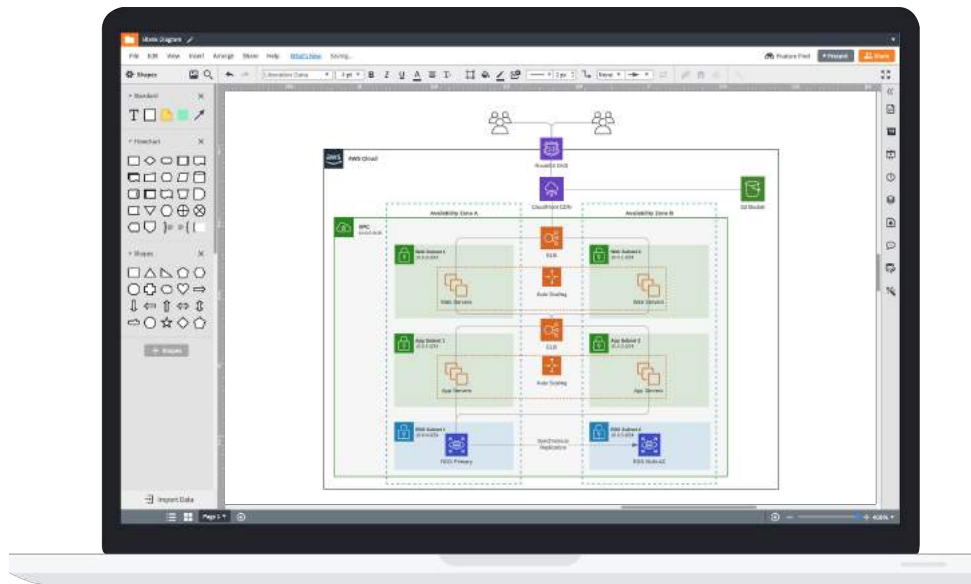
systems and architecture.

## Design and document

complex applications and systems in one source of truth.

## Share your vision

of systems and networks with key stakeholders and non-technical people.



# Hundreds of templates and shape libraries

For any use case

Search templates...

Recommended for You

- ▼ Standard
  - Build flowcharts
    - Flowcharts
    - Swimlane diagrams
    - BPMN diagrams
  - Plan and track proje...
    - Timelines
    - Gantt charts
    - Reports and dashbo...
    - Taskboards
  - ▼ Visualize technical ...
    - Cloud architecture ...
    - Database diagrams
    - Network diagrams
    - System diagrams
    - Service managem...
  - Brainstorm ideas
    - Mind maps
    - Idea boards
    - Venn diagrams

3.0 Incident Categorizat...

4.0 Initial Diagnosis (1)

4.0 Initial Diag...

7.0 Resolution & Recovery

8.0 Incident Closure

9.0 Major Incid...

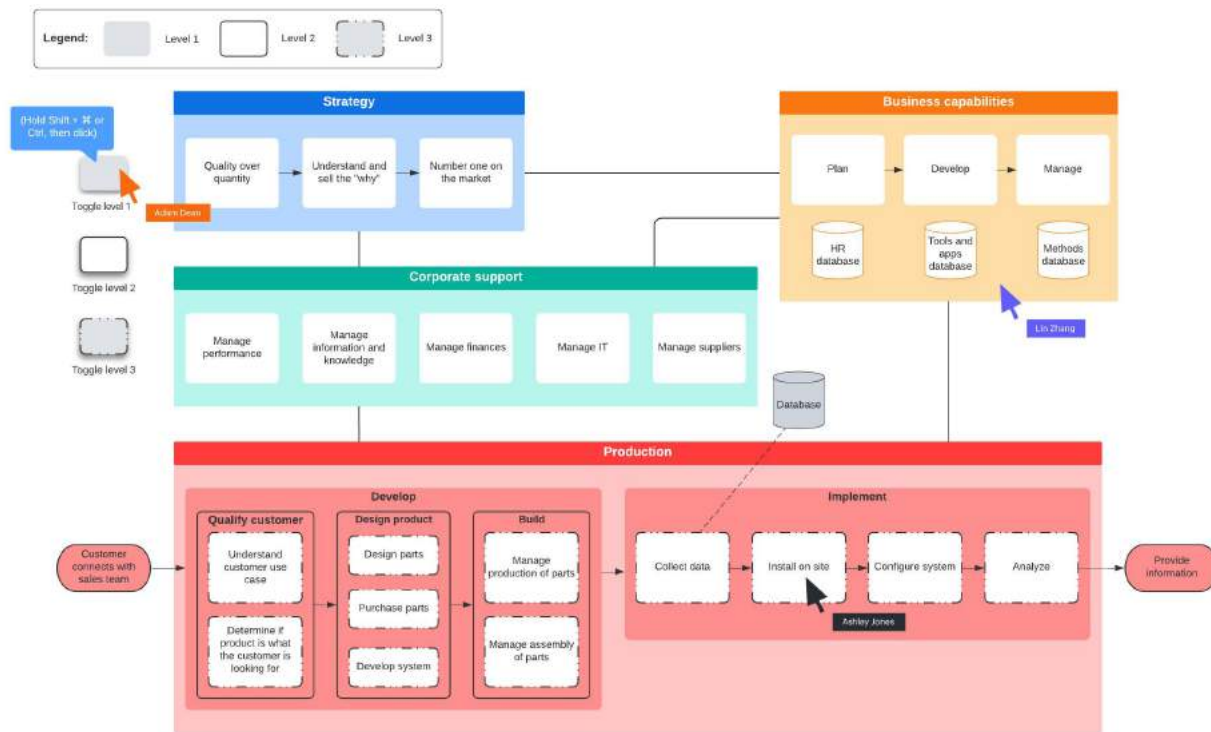
API flowchart with swi...

AWS Kubernetes nodes

AWS (2017) ho...

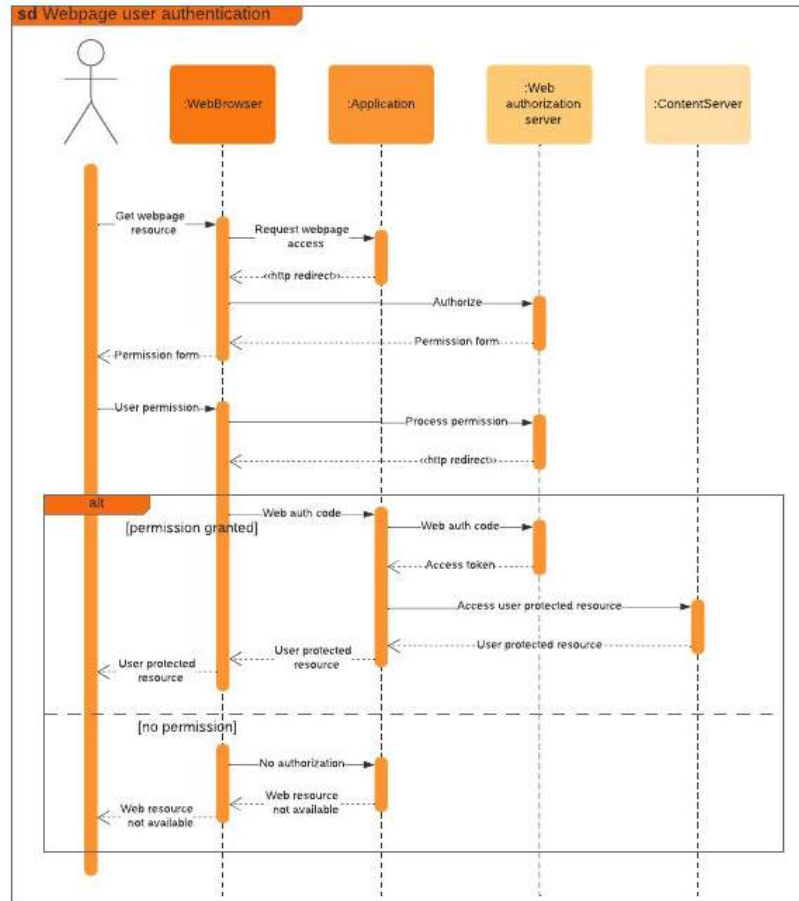
# Business architecture

See relationships between your business and technical components



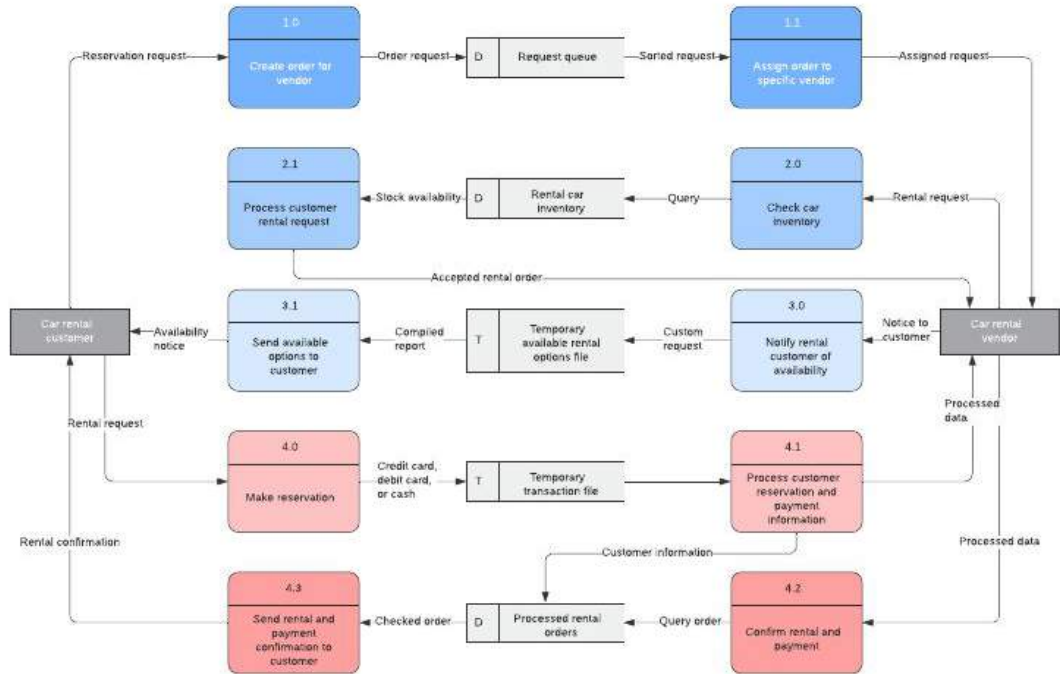
# UML diagrams

Understand software development requirements from design models to maintenance



# Data flows

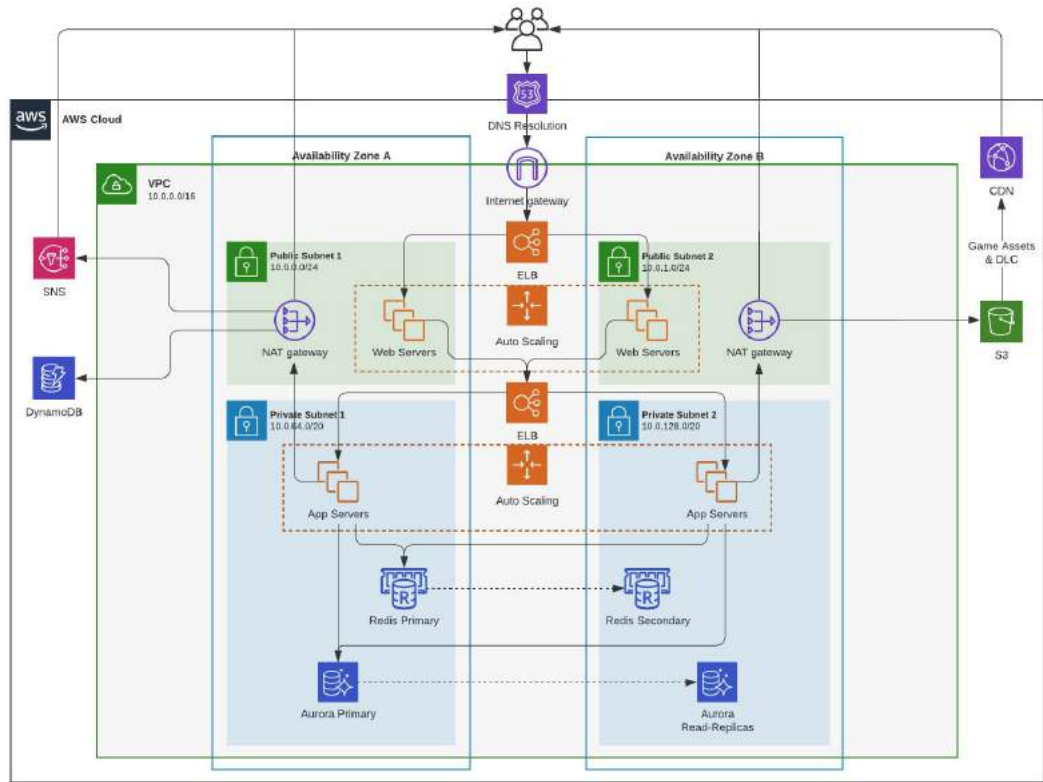
Illustrate how data moves through systems





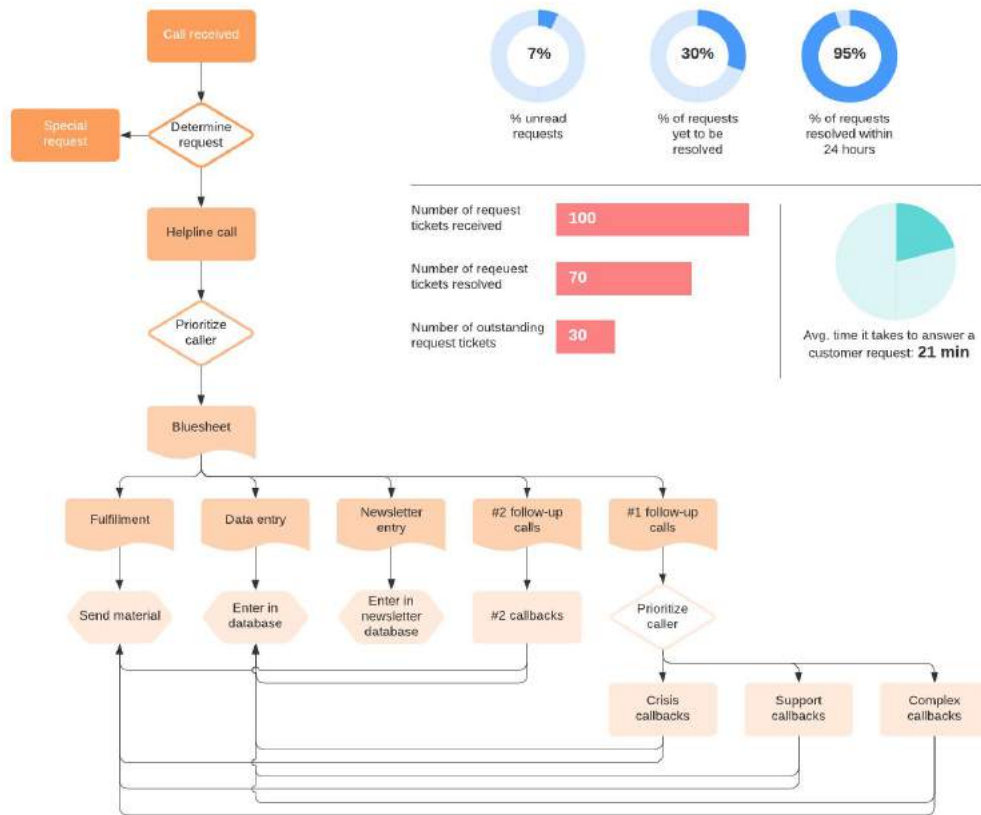
# Cloud architecture

Compare current state  
and future state



# IT processes

Visualize, analyze, and track your IT workflows

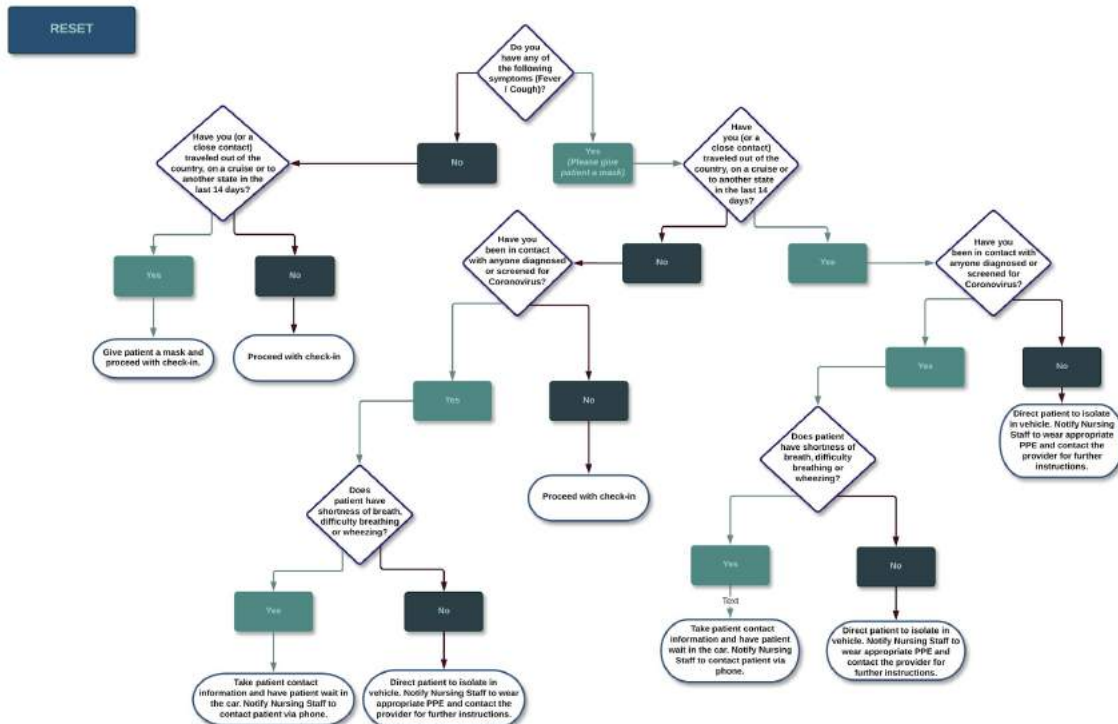


# COVID-19

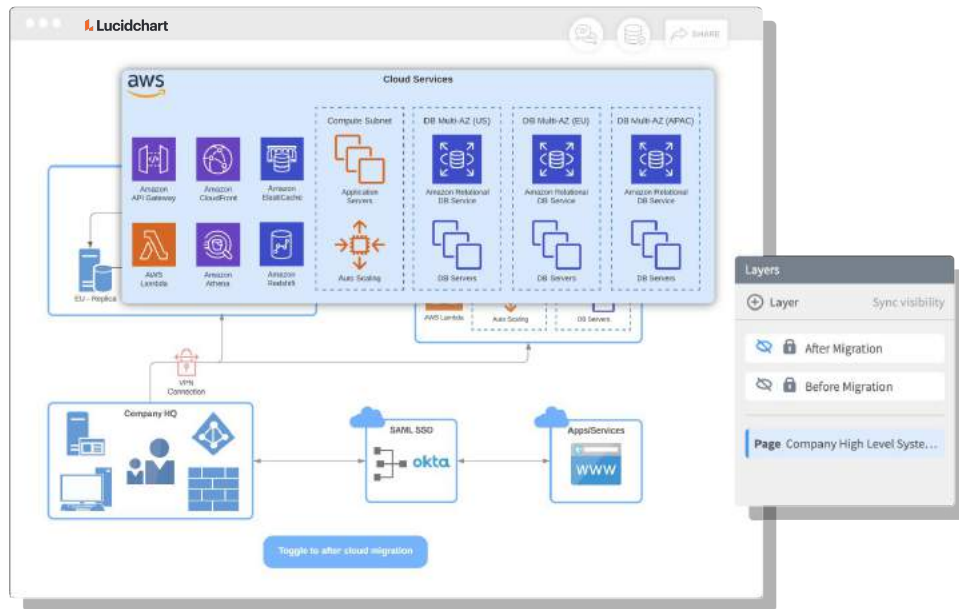
Document and adapt processes to serve patients during the rapidly-changing COVID-19 pandemic

[Enter Hospital Name Here]  
Novel Coronavirus (COVID-19)  
GREETER

*\*Please screen ALL patients and visitors BEFORE Entering. Do not allow patients/visitors to enter clinical setting without completing this screening\**



Together, **Lucidchart** and **LeanIX** empower organizations to visualize, understand, and optimize their enterprise architecture.



# Start diagramming with Lucidchart today

Sign up for a free Team trial at  
[www.lucidchart.com](https://www.lucidchart.com)

Need higher security and  
advanced features?

Contact us [leanix\\_sales@lucidchart.com](mailto:leanix_sales@lucidchart.com)

